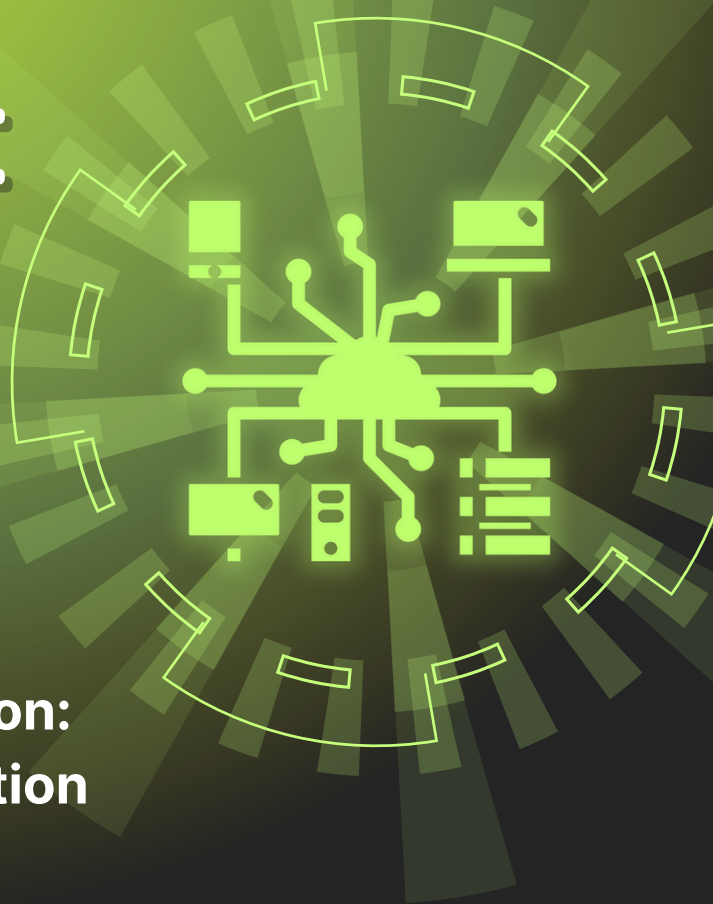


SCROLLS OF DOMINION

Volume 1



The Power of Divine Separation: Why Elevation Requires Isolation

INTRODUCTION

In the divine architecture of destiny, separation is often God's tool for elevation. While the world defines success by connection, in the spirit realm, cutting away is sometimes how God positions His own for visibility and power. This scroll explores the prophetic truth that not every person is permitted to follow you into your next level, and why divine separation must be discerned, not feared.

1

BIBLICAL FOUNDATIONS OF SEPARATION

1.1 Abraham and Lot – Genesis 13:14

“And the Lord said unto Abram, after that Lot was separated from him...”

Abraham's destiny remained veiled **until Lot left**.

Divine vision comes clearly when distractions are removed.

Some connections cloud divine instruction.

1.2 Joseph – Genesis 37:28, 41:41

Sold by brothers, forgotten in prison—but separation positioned him for rulership.

Rejection is often redirection.

Some people must leave for kings to call for you.

1.3 Jesus – Luke 5:16

“But Jesus often withdrew to lonely places and prayed.”

Even Jesus needed separation to activate intimacy and clarity.

2

REVELATORY INSIGHT

2.1 Separation Precedes Revelation

When Lot left, God spoke.

Separation releases new instructions.

2.2 Isolation Is Not Abandonment

Being alone doesn't connote being forsaken.

God sometimes clears the stage to have your undivided attention.

2.3 Not All Attachments Are Covenant

Some people were never sent—only allowed.

Covenant is proven under pressure, not proximity.

2.4 Divine Separation Breaks Familiarity

Familiarity breeds contempt.

Separation renews honor and perspective.



SCROLLS OF
DOMINION

By Apostle Johnson Suleman

Scrolls of Dominion – Gold Tier Resource | For Empowered Governance, Rulership, and Discernment

WWNCenter.ORG

SCROLLS OF DOMINION

Volume 1



3

CASE STUDY – GIDEON’S ARMY (Judges 7)

Started with 32,000 men, God reduced it to 300.

Separation by instruction, not sentiment.

God’s strategy: **Quality over quantity.**

Dominion often begins when distractions end.

4

PRACTICAL SIGNS OF DIVINE SEPARATION

Sudden relational distance or misunderstandings

Closed doors without explanation

Repeated cycles of “almost helping you” people

Emotional pain tied to alignment shifts

Heightened hunger for prayer and consecration

5

PRAYER ARCHITECTURE

My Father, My Father, As I begin to pray:

Expose every attachment that has expired.

Disconnect me from every person not aligned with my purpose.

Grant me the courage to walk away from familiar bondage.

Let divine vision emerge where there’s been confusion.

I receive the wisdom to recognize divine exits.

Father, use separation to birth elevation.

6

DECLARATIONS OF DOMINION

I am not abandoned, I am being promoted.

I lose nothing that Heaven cannot replace.

Everyone who walked away made space for divine alignment.

As Lot left Abraham, so is clarity coming to me.

As Joseph was sold, so am I being positioned for influence.

I declare: **My isolation is birthing coronation!**

CONCLUSION

When God begins to separate you, do not panic—**discern**. Elevation demands empty hands. You cannot receive the next instruction while clinging to expired relationships. Let this scroll serve as a prophetic lens into the silent seasons of your life.

The silence is not punishment—it’s preparation.

Welcome to a higher dimension.



SCROLLS OF
DOMINION

By Apostle Johnson Suleman

Scrolls of Dominion – Gold Tier Resource | For Empowered Governance, Rulership, and Discernment

WWNCenter.ORG